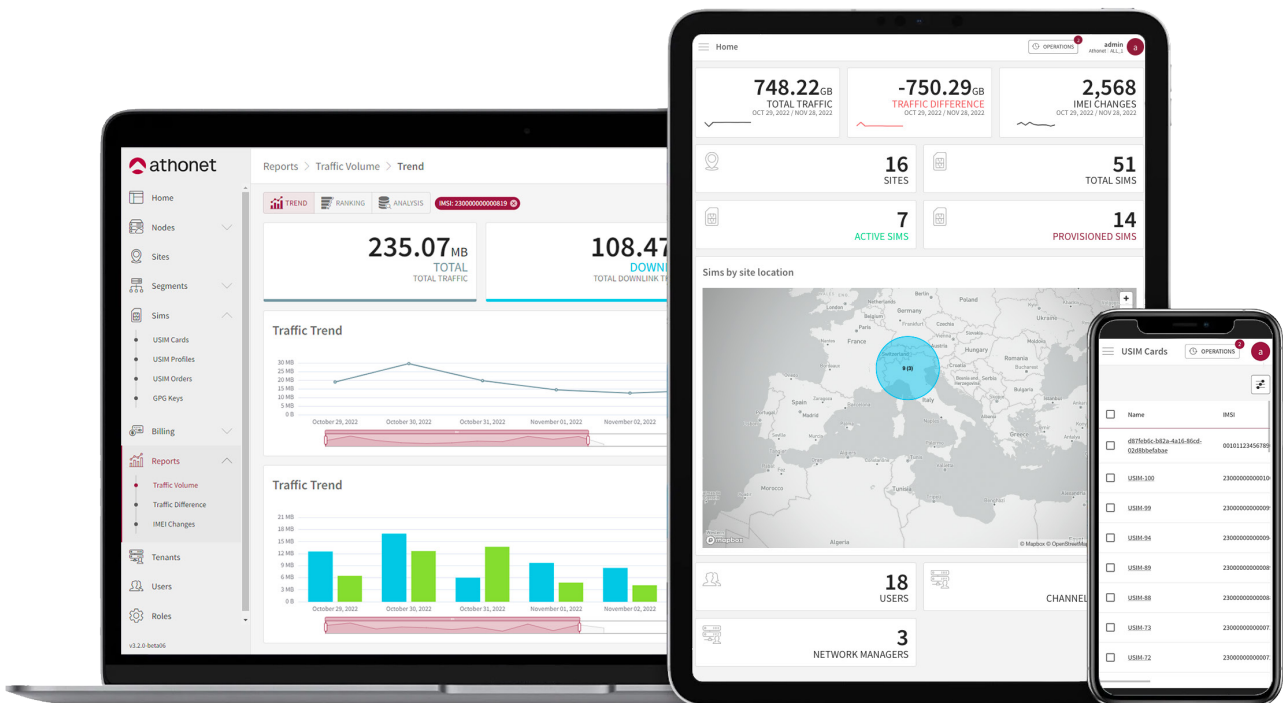


Athonet Dashboard

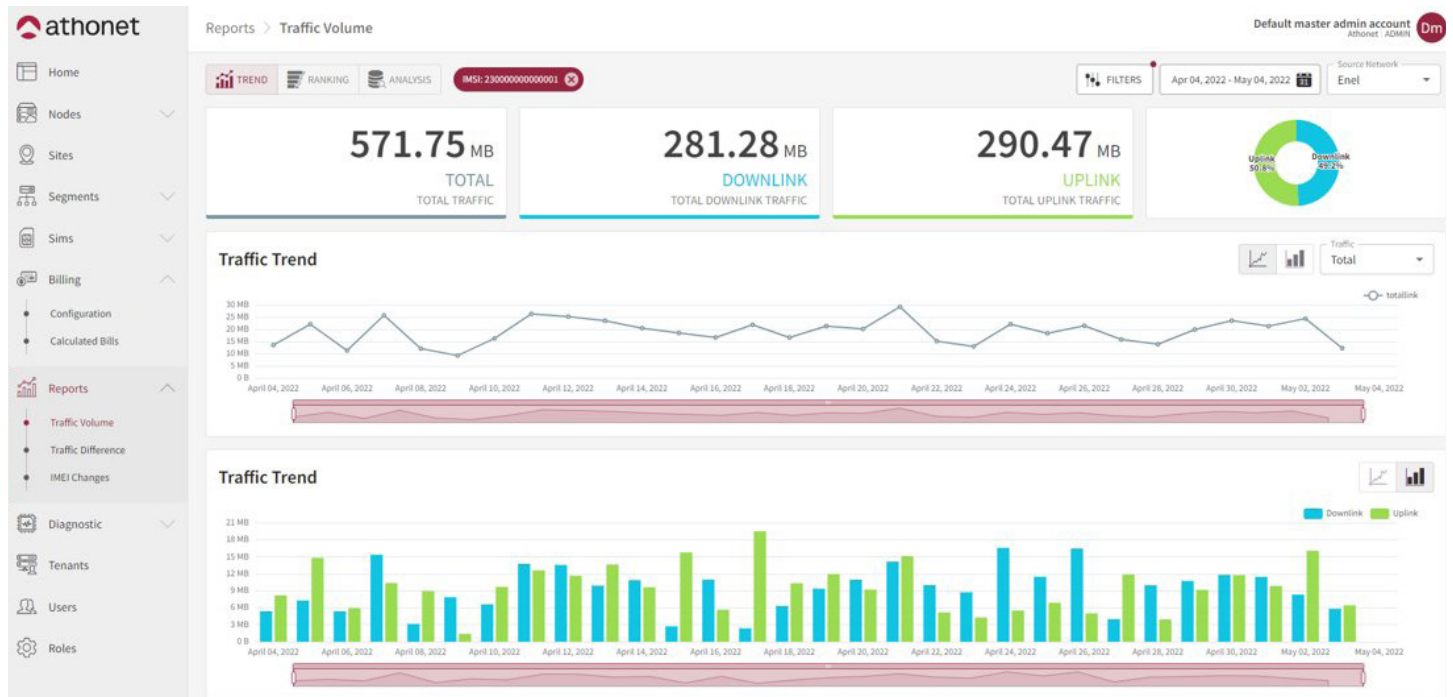
Manage all your networks in a single place



Athonet Dashboard

Manage all your networks in a single place

Athonet Dashboard, realised by Athonet, a Hewlett Packard Enterprise acquisition, allows the central management of multiple HSSs and the relative provisioning of subscriber data, including the relative credentials, secret keys, USIM data profiles, and associated quality of service profile. The usability of this tool focuses on finding the proper balance between simplicity and the level of detail needed to manage a mobile network. Thanks to the event sourcing technology it's easy to keep tracks of all the users operations.



Dashboard features

1

Multitenancy

Multi-tenant management enables different user groups (tenants) to identify and assign individual roles within the network

User base management enables the assignment of a specified role to each user

Role base management enables the creation of individual roles providing various levels of access

2

Provisioning

USIM order workflow support enables the fulfillment of encrypted order documents delivered to USIM vendors

USIM lifecycle management enables control of the USIMs functionality including current USIM status, activation/deactivation, and bar/unbar

Metadata management enables the performance of advanced searches using SIM labeling

Event handling enables a history log to be created of all SIM events

Athonet Dashboard

Manage all your networks in a single place

3

Services

Network site support enables the creation of geographical locations that can be bound to tenants, nodes, or USIMs and be displayed on the landing page

Node configuration enables the creation of abstract nodes and the configuration of HSS parameters inside a node

Profile management enables the configuration of a segment map inside the HSS specifying the APN and APN profile while setting the USIM profile dependencies to a segment

4

Analytics

Data traffic reports enable the analysis of data traffic volumes with advanced filter capabilities

IMEI change reports enable fraud analysis based on the USIMs that change their device within certain time parameters

Billing analysis enable the calculation of bills based on traffic data volume inputs

Event diagnostic enables the tracking of all legged USIM activity

New features

Release 3.2

SIM Dynamic Info (FR-433)	Dashboard connect with ES to retrieve. <ul style="list-style-type: none">• Operator• Connection status (e.g. connected/disconnected)• IMEI• last connection time• IP address
Landing page SIM localization (FR-474)	Users can: <ul style="list-style-type: none">• Visualize SIMs in a geo map grouped together• View the number of SIM inside the network and understand it holistically• Access zoom capabilities to see network clusters
Feature Flag and Role Base View (FR-541)	Feature list (Billing, Traffic, Dual IMSI, MapBox) is handled by feature flag configurable during deployment



a Hewlett Packard Enterprise acquisition